



Infected leaves of Holy Basil

PARUL PARUL

READ REVIEWS

WRITE A REVIEW

CORRESPONDENCE:
parul100198@gmail.com

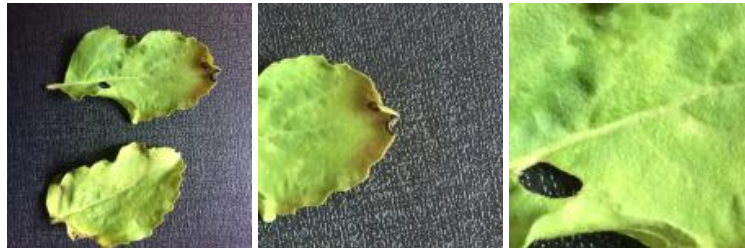
DATE RECEIVED:
October 06, 2018

© parul This article is distributed under the terms of the [Creative Commons Attribution 4.0 International License](https://creativecommons.org/licenses/by/4.0/), which permits unrestricted use, distribution, and redistribution in any medium, provided that the original author and source are credited.



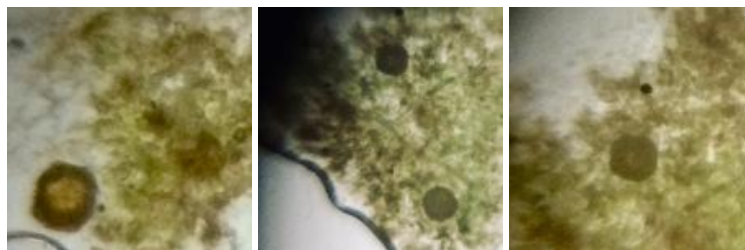
Holy Basil (*Ocimum sanctum*), is a short lived perennial plant belonging to family Lamiaceae. Its leaves are medicinally important and used as a fresh or dried herb.

A diseased leaf was spotted on the Tulsi plant growing in my terrace. I plucked the leaf and saw its tips had turned necrotic. On magnifying I could see certain hypertrophied areas.



Browning on tips and edges as well as hypertrophied areas

I prepared temporary mount of the diseased part and observed under the foldscope to find rounded dark round localised patches. Are these cysts or simple localized necrotic lesions?



I am unable to identify the causal organism.

Jasveen, GGSDS College, Chandigarh