



The transverse section stem of *Ficus religiosa* (Peepal) and staining with safarnine

DR. KALAWATI SAINI

READ REVIEWS

WRITE A REVIEW

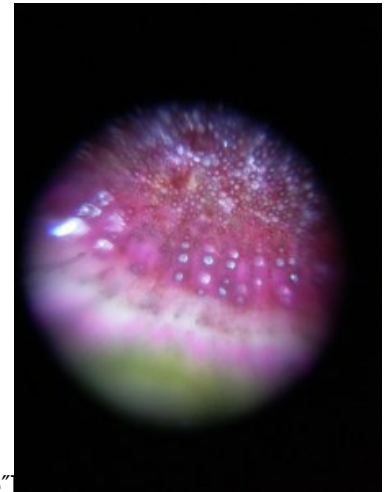
CORRESPONDENCE:

kalawati.saini@mirandahouse.ac.in

DATE RECEIVED:

October 10, 2018

© saini This article is distributed under the terms of the [Creative Commons Attribution 4.0 International License](#), which permits unrestricted use, distribution, and redistribution in any medium, provided that the original author and source are credited.



[caption id="attachment_71033" align="alignnone" width="225"] The transverse section of stem and many different rings are present which are arranged in circular manner and also vascular bundles are conjiont , collateral and endarch [/caption]