



Identification keys of storage pest: Cowpea weevil- #Indiafoldscopephase 1

SOUMITRA BANERJEE

READ REVIEWS

WRITE A REVIEW

CORRESPONDENCE:
sb5.foldscope@gmail.com

DATE RECEIVED:
November 27, 2018

© Banerjee This article is distributed under the terms of the [Creative Commons Attribution 4.0 International License](#), which permits unrestricted use, distribution, and redistribution in any medium, provided that the original author and source are credited.



Infestation found in: Horse gram



Fig: Infested Horse gram pulse

Macrostructure image of infested pest:



Fig: Infested pest found in Horse gram pulse

assumed pest: Cowpea weevil (*Callosobruchus maculatus*)

Morphological characteristics (observed under foldscope)

- Antenna is slightly serrate from the fourth through apical segment(Fig 1)
- Elytra with bristle like parallel lines along with hairs and with two black spots(Fig 2)
- Bears a tooth near the apical end of femur ridge and tarsus of the hind leg is composed of 4 segments(Fig 3)

- Hind wing with folding lines and has dot like cells between the lines(Fig 4)



Fig. 1: Antennae of Cowpea weevil under foldscope

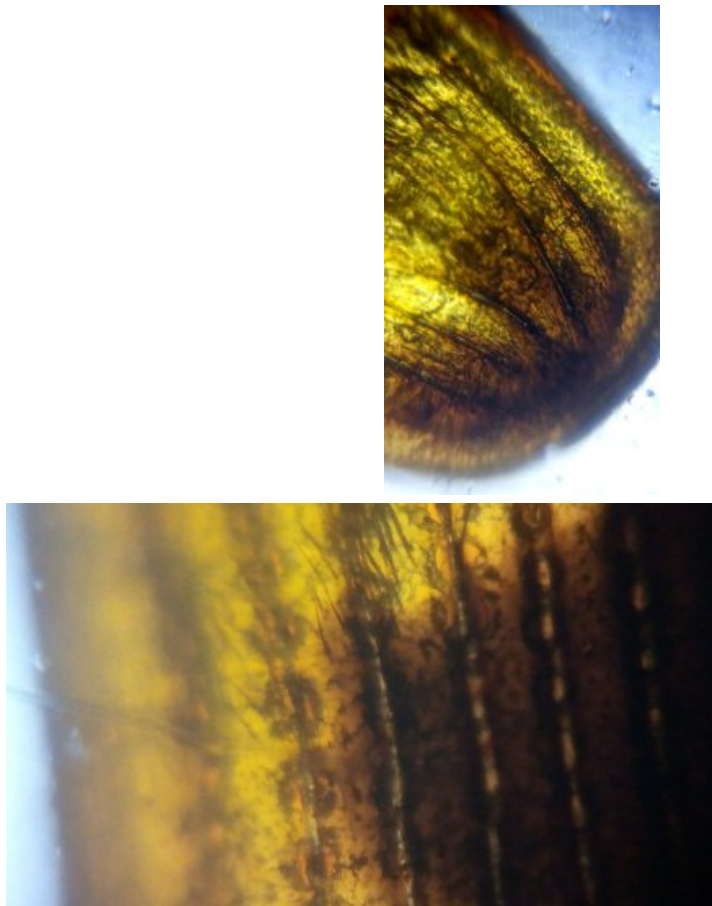


Fig. 2: Elytra of Cowpea weevil under foldscope

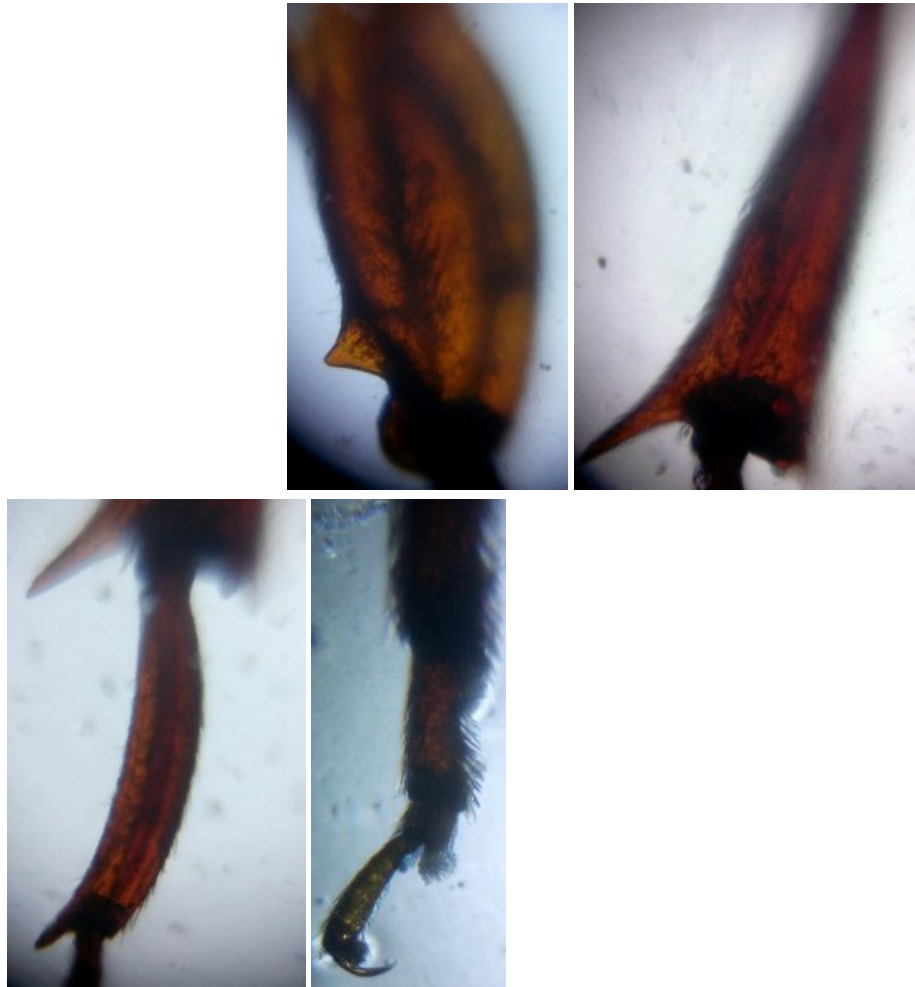


Fig. 3: Hind leg of Cowpea weevil under foldscope

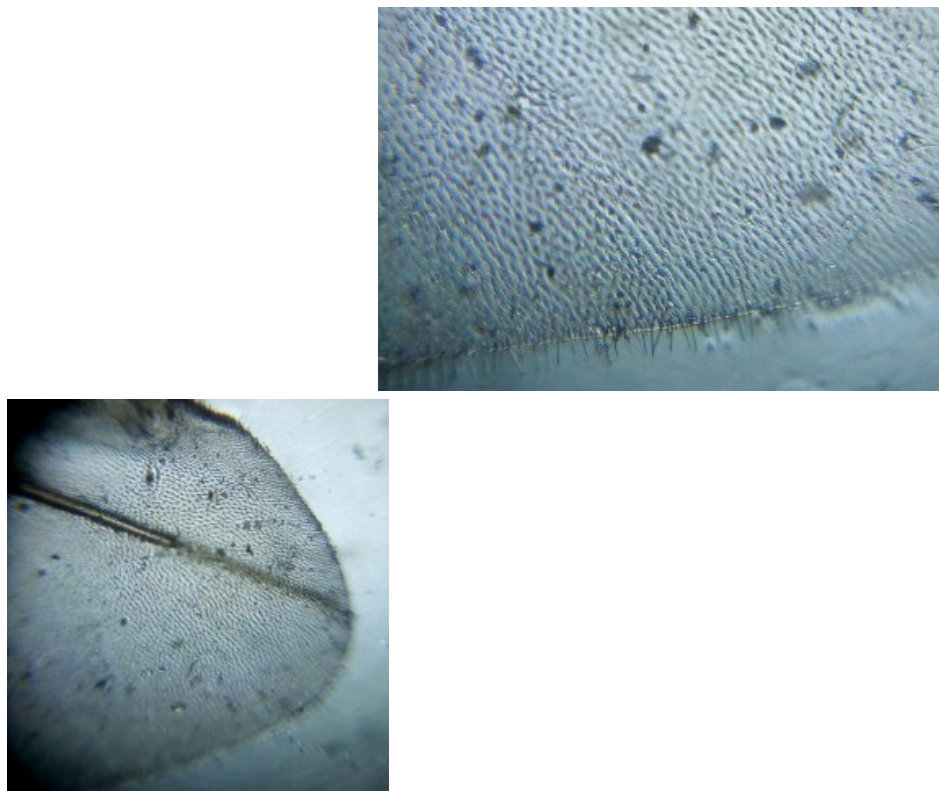


Fig. 4: Hind wing of Cowpea weevil under foldscope