



Identification keys of storage pest: Drug store beetle- #Indiafoldscopephase 1

SOUMITRA BANERJEE

READ REVIEWS

WRITE A REVIEW

CORRESPONDENCE:
soumitra.banerjee7@gmail.com

DATE RECEIVED:
November 27, 2018

© Banerjee This article is distributed under the terms of the [Creative Commons Attribution 4.0 International License](#), which permits unrestricted use, distribution, and redistribution in any medium, provided that the original author and source are credited.



Infestation found in: Coriander seed



Fig. Infested Coriander spice

Macrostructure image of infested pest:



Fig: Infested pest found in Coriander spice

Assumed pest: Drug store beetle (*Stegobium paniceum*)

Morphological characteristics (as observed under Foldscope)

- Antennae ending with three enlarged segments(Fig 1)

- Elytra have rows of pits giving them a striated (lined) appearance (Fig 2)
- Five segments in tarsus of hind leg (Fig 3)
- Hind wing with folding lines and has dot like cells between the lines(Fig 4)

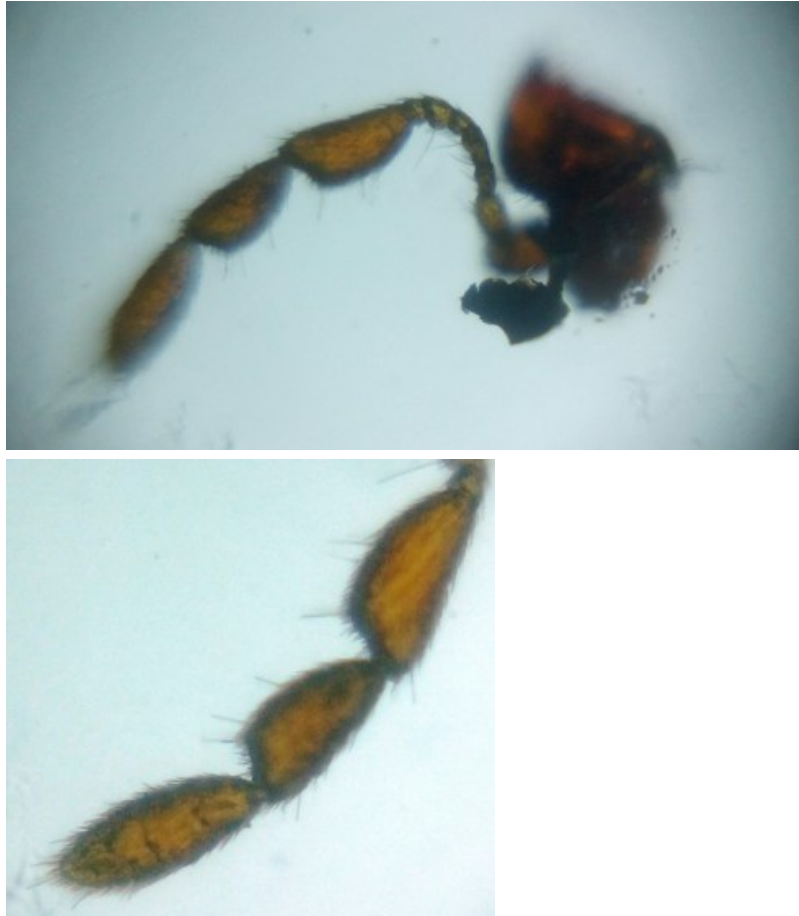


Fig. 1: Antenna of Drug store beetle under foldscope

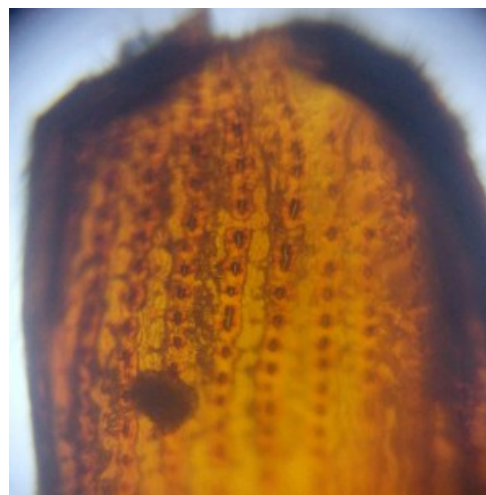




Fig. 2: Elytra of Drug store beetle under foldscope



Fig. 3: Hind leg of Drug store beetle under foldscope

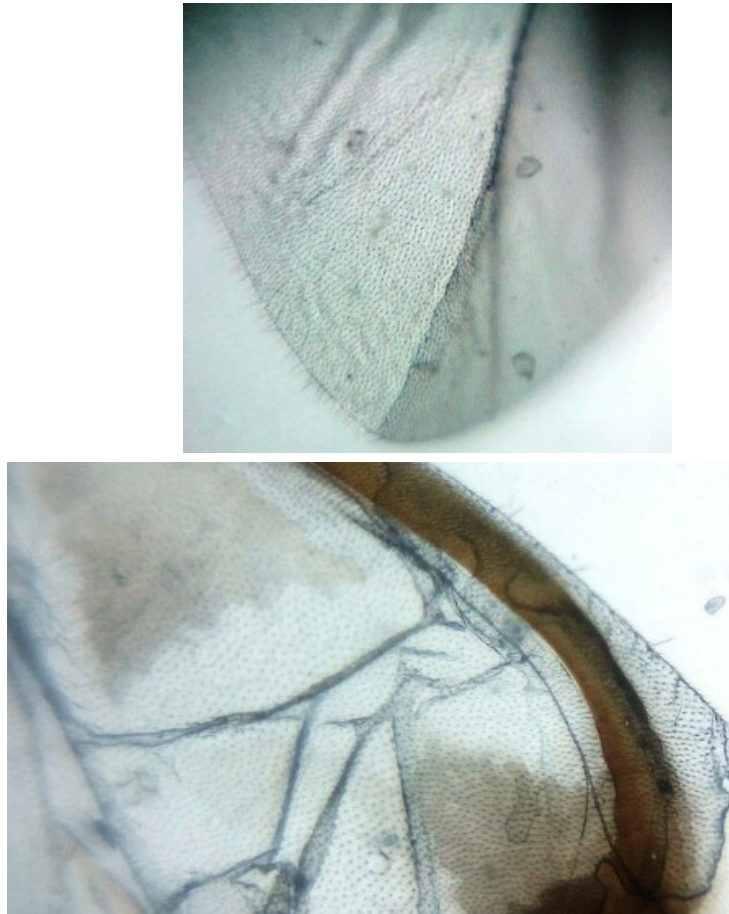


Fig. 4: Hind wing of Drug store beetle under foldscope