



Keys for identification of storage pest- Cigarette beetle- #Indiafoldscopephase 1

MEGHASHREE H M

READ REVIEWS

WRITE A REVIEW

CORRESPONDENCE:
meghashreegowda.hmr@gmail.com

DATE RECEIVED:
November 27, 2018

© H M This article is distributed under the terms of the [Creative Commons Attribution 4.0 International License](#), which permits unrestricted use, distribution, and redistribution in any medium, provided that the original author and source are credited.



Infestation found in: Tamarind seed flour



Fig. Infested Tamarind seed flour

Assumed pest: Cigarette beetle (*Lasioderma serricorne*)

Morphological characteristics (for confirmation)

- Antenna is serrate and all segments are uniform(Fig 1)
- Elytra is smooth with no horizontal lines(Fig 2)
- Bears a tooth near the apical end of femur ridge and tarsus of the hind leg is composed of 5 segments(Fig 3)
- Hind wing with folding lines and has dot like cells between the lines(Fig 4)



Fig. 1: Antenna of Cigarette beetle under foldscope

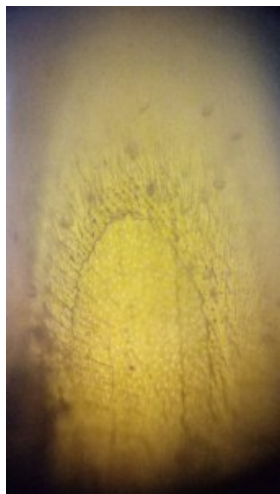
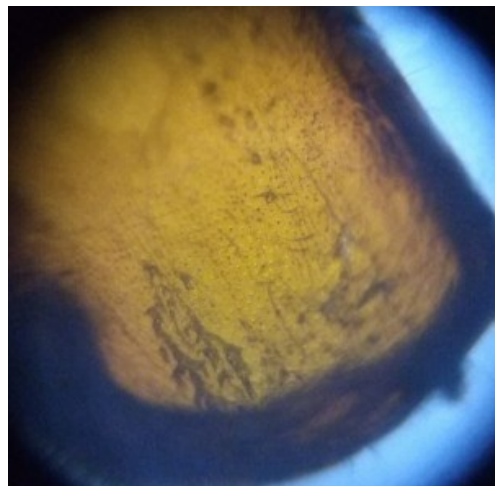


Fig. 2: Elytra of Cigarette beetle under foldscope



Fig. 3: Hind leg of Cigarette beetle under foldscope





Fig. 4: Hind wing of Cigarette beetle under foldscope