



Keys for identification of storage pest- Mediterranean pulse beetle - #Indiascopephase 1

SOUMITRA BANERJEE

READ REVIEWS

WRITE A REVIEW

CORRESPONDENCE:

soumitra_banerjee18@rediffmail.com

DATE RECEIVED:

November 27, 2018

© Banerjee This article is distributed under the terms of the [Creative Commons Attribution 4.0 International License](#), which permits unrestricted use, distribution, and redistribution in any medium, provided that the original author and source are credited.



Infestation found in: Field bean



Fig: Infested Field bean pulse

Macrostructure image of infested pest:



Fig: Infested pest found in Field bean pulse

Assumed pest: Mediterranean pulse beetle (*Bruchus emarginatus*)

Morphological characteristics (for confirmation as observed under microscope)

- Antennae is serrate and dark in colour (Fig 1)
- Elytra with punctate distinct lines and gray spots (Fig 2)
- The femur of the hind leg are enlarged and bear a tooth and three tarsal segments in hind leg (Fig 3)
- Hind wing with folding lines and has dot like cells between the lines(Fig 4)

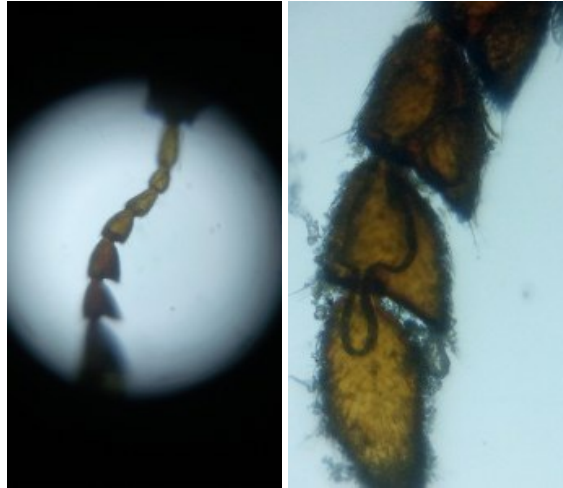


Fig. 1: Antennae of mediterranean pulse beetle under foldscope

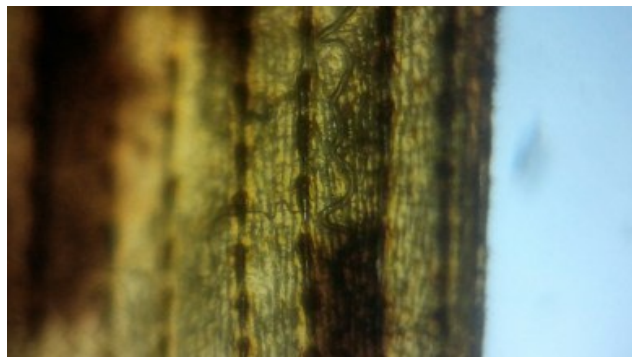
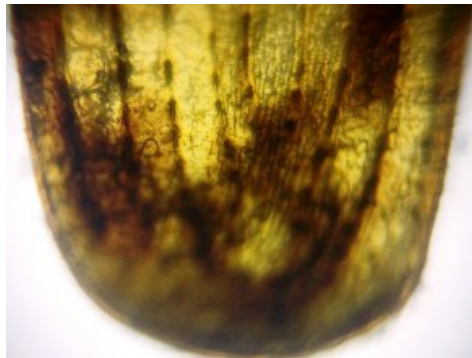
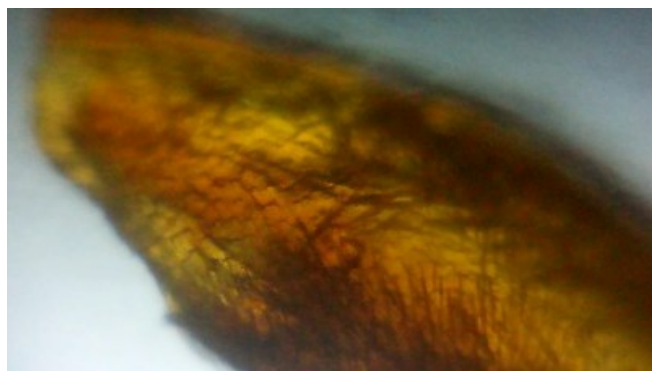


Fig. 2: Elytra of mediterranean pulse beetle under foldscope



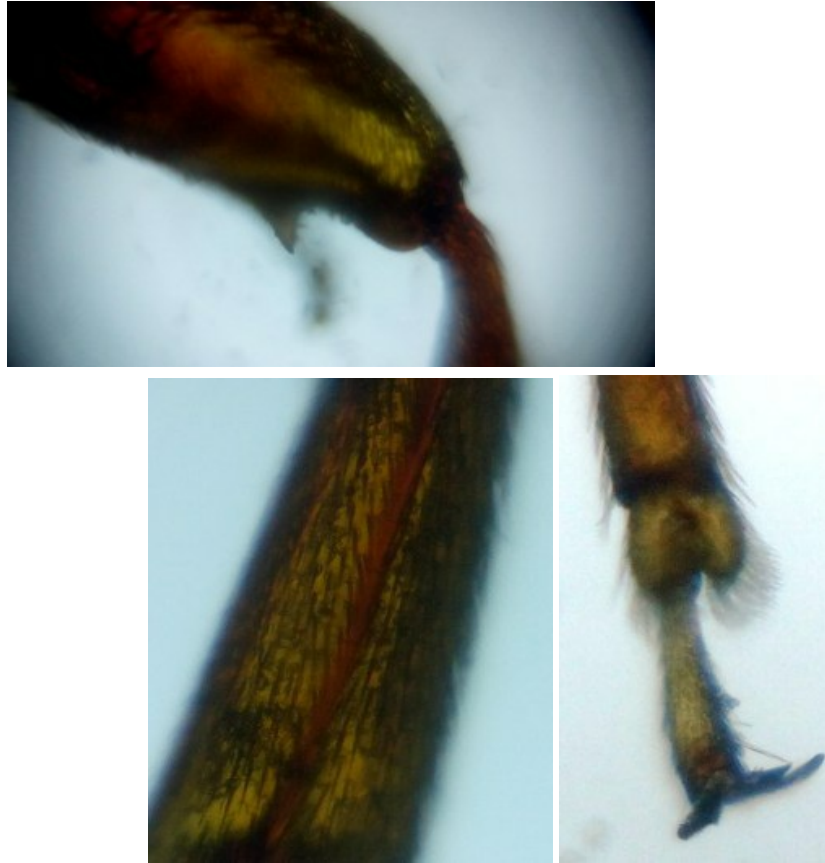


Fig . 3: Hind leg of mediterranean pulse beetle under foldscope

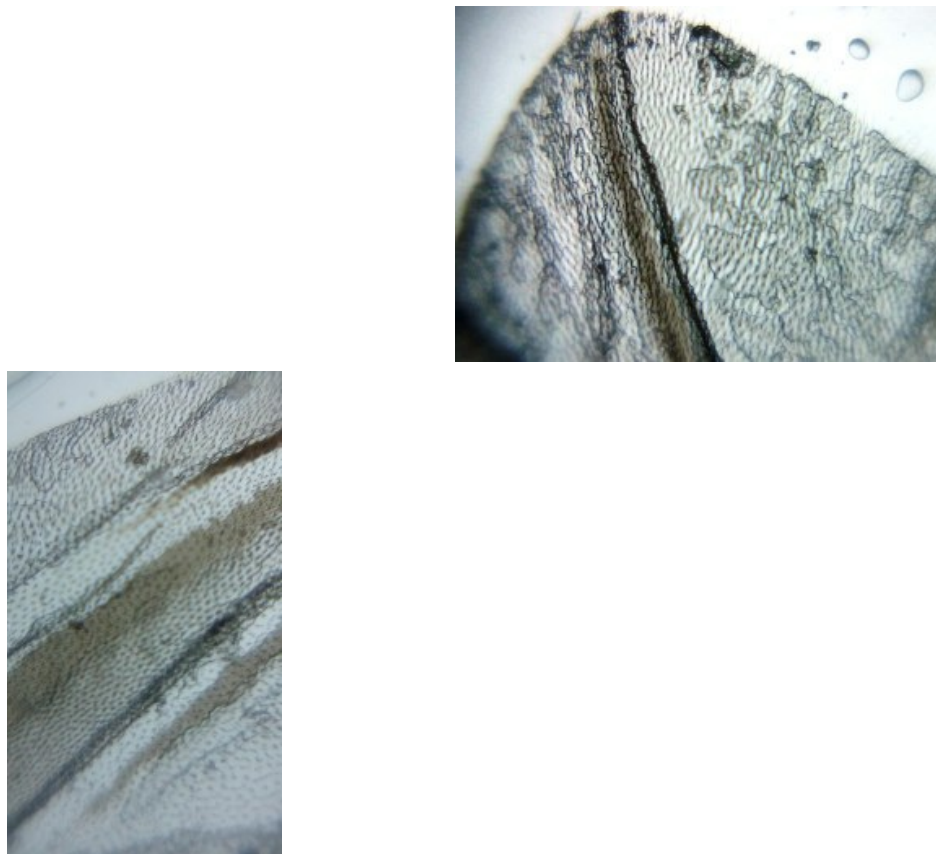


Fig. 4: Hind wing of mediterranean pulse beetle under foldscope

