



Identification keys of storage pest: Confused flour beetle- #Indiafoldscopephase 1

SOUMITRA BANERJEE

READ REVIEWS

WRITE A REVIEW

CORRESPONDENCE:

soumitra.banerjee@ciirc.jyothyit.ac.in

DATE RECEIVED:

November 28, 2018

© Banerjee This article is distributed under the terms of the [Creative Commons Attribution 4.0 International License](https://creativecommons.org/licenses/by/4.0/), which permits unrestricted use, distribution, and redistribution in any medium, provided that the original author and source are credited.



Assumed pest: Confused flour beetle(*Tribolium confusum*)

Confused flour beetle attacks stored grains and stored foods. Adults and larvae feed on broken kernels and finely ground materials in grain storages, flour mills, warehouses and wherever grain or grain products are stored.

Morphological characteristics (as observed under foldscope)

- Adults are approximately 3 – 4 mm long and reddish brown
- The antennae segments increase in size gradually from the base to the tip to form a club of four segments(Fig 1)
- Elytra with unit shapes almost square, parallel-sided striations(Fig 2)
- 4 segments in tarsus of hind leg(Fig 3)

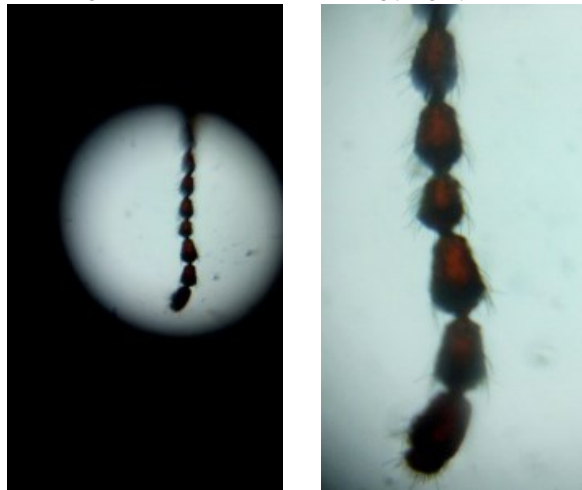


Fig. 1: Antenna of Confused flour beetle under foldscope

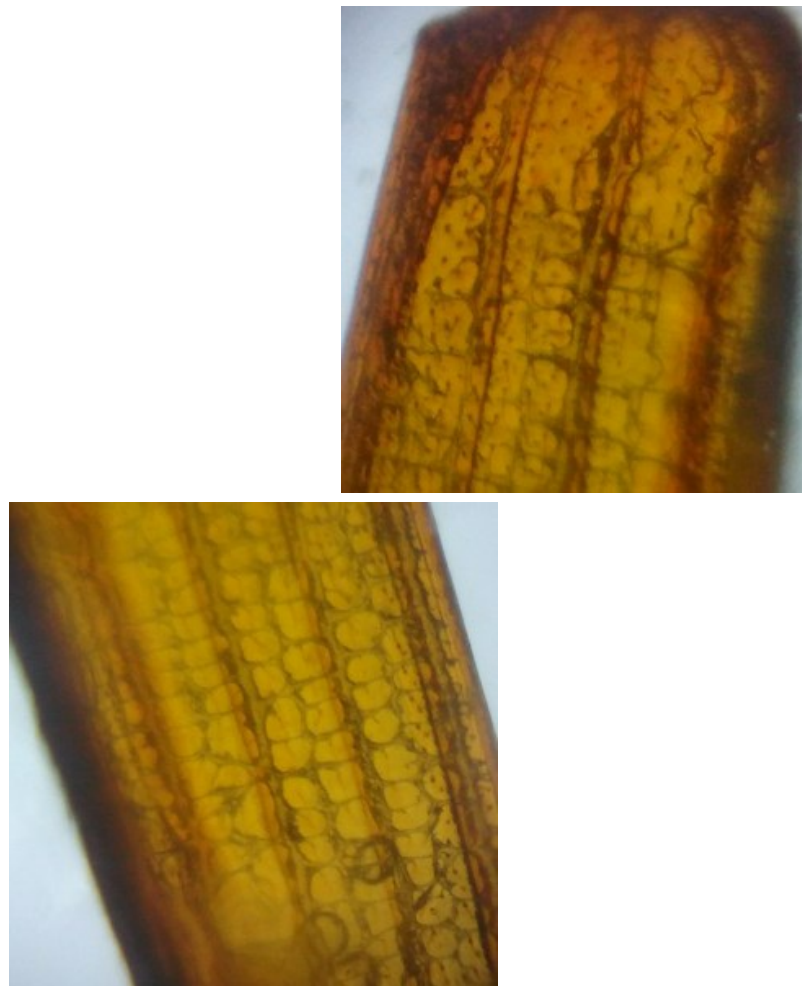


Fig. 2: Elytra of Confused flour beetle under foldscope



Fig. 3: Hind leg of Confused flour beetle under foldscope

