



North-East Twinning Program- Bean aphid from North-East under foldscope- #Indiafoldscopephase1

SOUMITRA BANERJEE

READ REVIEWS

WRITE A REVIEW

CORRESPONDENCE:
sb4.foldscope@gmail.com

DATE RECEIVED:
November 28, 2018

© Banerjee This article is distributed under the terms of the [Creative Commons Attribution 4.0 International License](#), which permits unrestricted use, distribution, and redistribution in any medium, provided that the original author and source are credited.



Bean aphid

Scientific name: *Aphis craccivora*

Aphis craccivora prefers plants in the Fabaceae (beans, peas and groundnuts), but it is highly polyphagous and has been found on many plant species. It feeds on the young shoots, leaves, flowers and fruits, and is strongly ant attended. It is also a vector of several viruses including broad bean mosaic virus, cucumber mosaic virus and groundnut rosette virus. The cowpea aphid has a cosmopolitan distribution.



Fig. 1: Aphids feeding on plant leaf





Fig. 2: Dorsal view of Bean aphid observed under foldscope

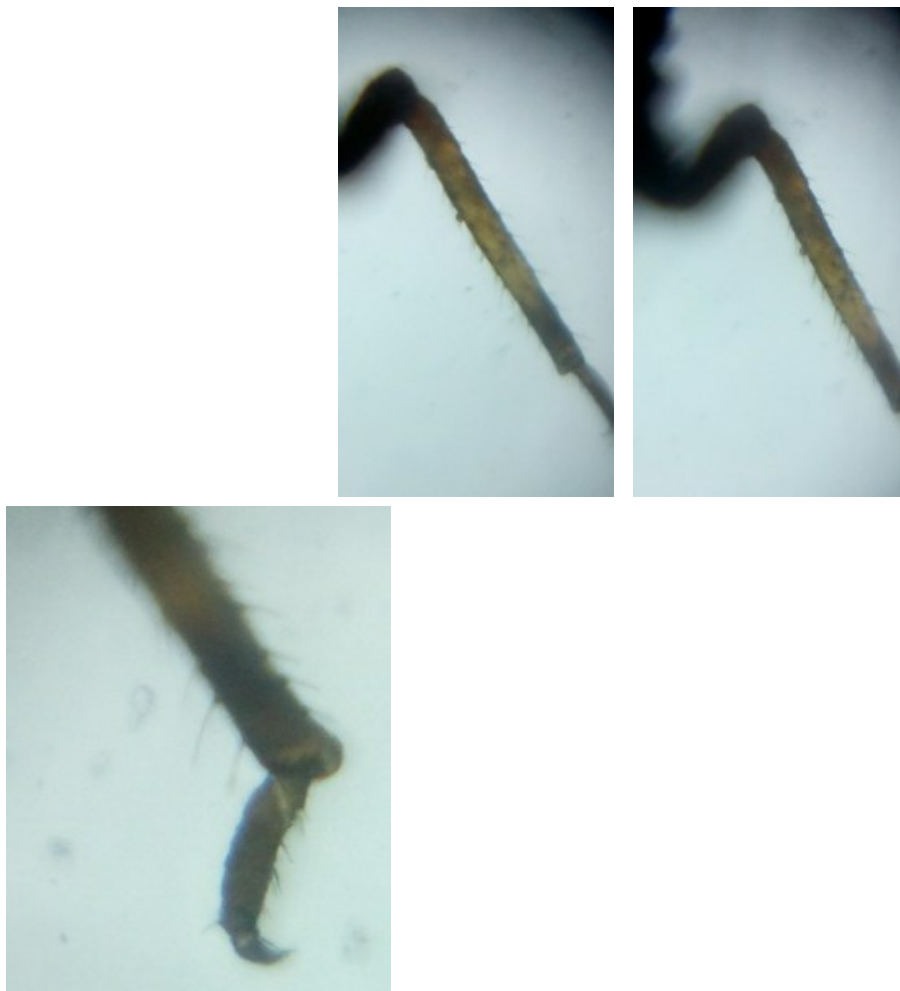


Fig. 3: Leg of Bean aphid observed under foldscope